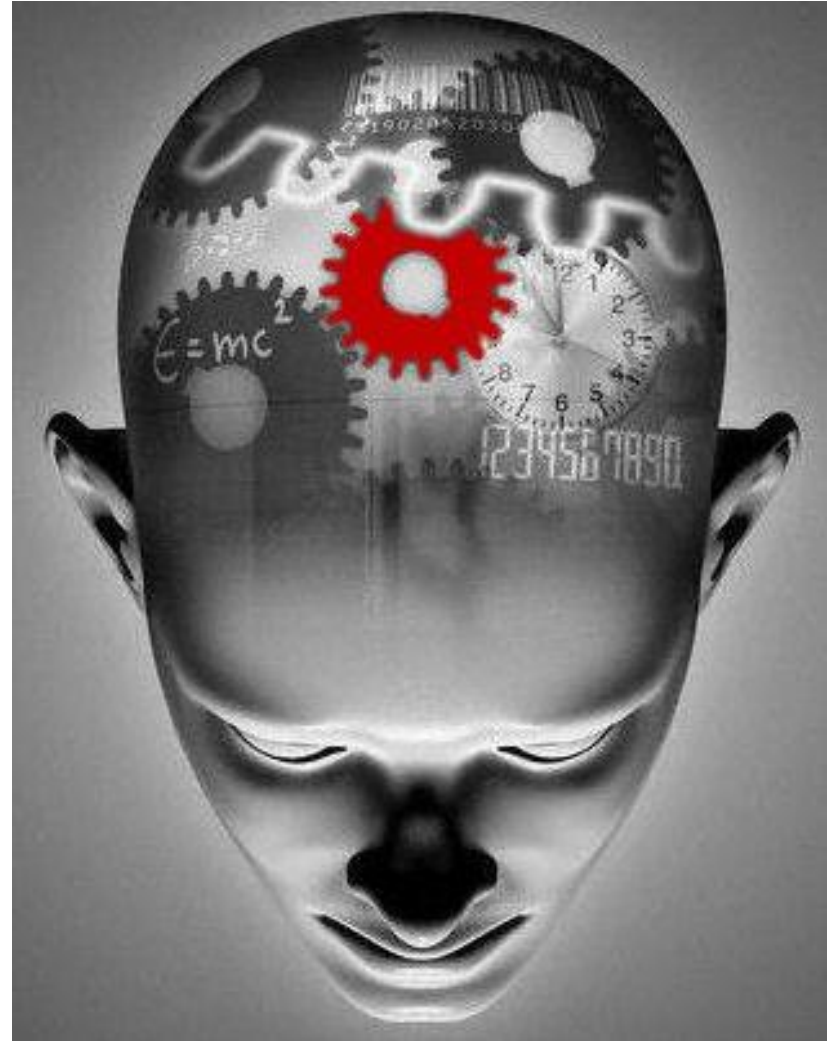


# Welcome to Psychology

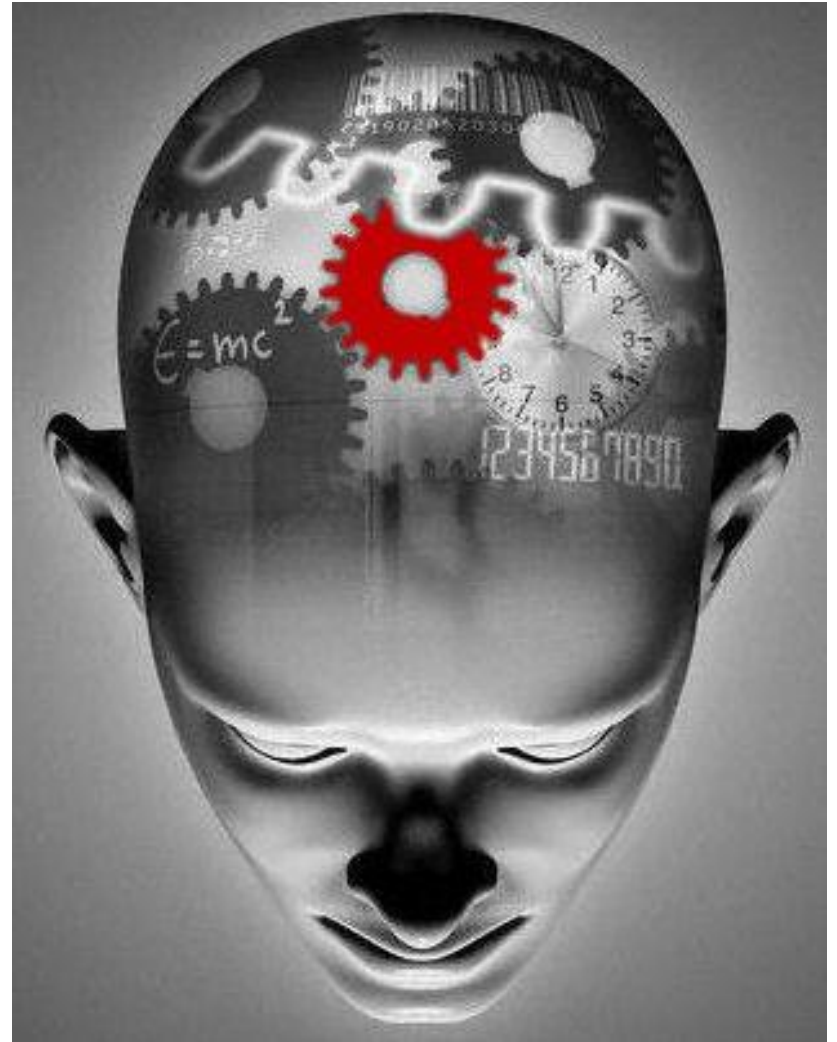
*The department has two members of staff...*

# *What is Psychology?*

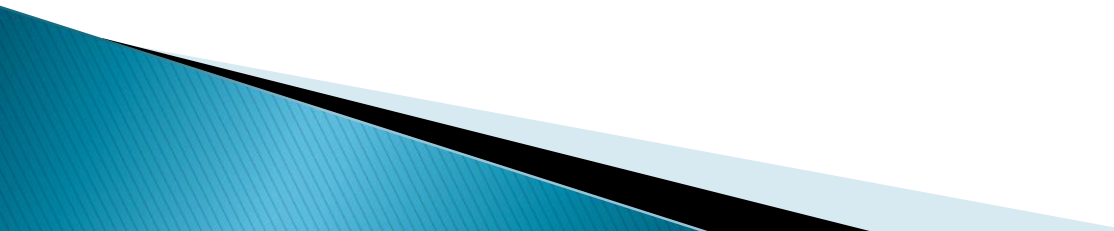


# *What is Psychology?*

Psychology is the scientific study of the mind and behaviour.



# What grades do you need?

- ▶ You need a 6 in English GCSE – you have to be good at writing essays.
  - ▶ You need a 6 in Science GCSE – psychology is a science; some aspects of the course have lots of biology and you have to think like a scientist. You will carry out small scale experiments, get data, analyse it and write it up.
  - ▶ You need a 6 in Maths. 10% of the course is Maths.
  - ▶ If you have studied psychology at GCSE that is great, but it is NOT ESSENTIAL for A level.
  - ▶ **WARNING:** do not choose psychology because you think it is an easy option – it is not!
- 

# Subject content

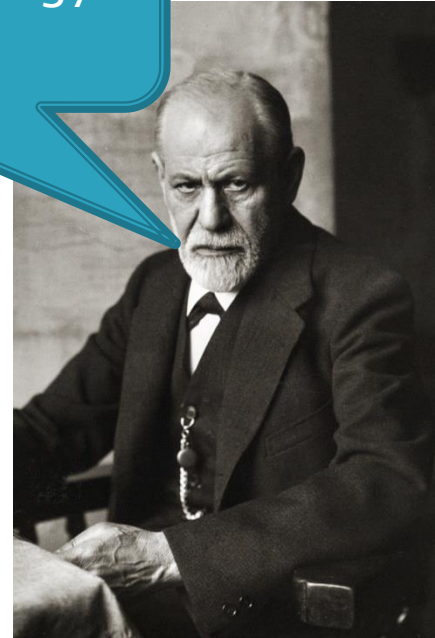
- ▶ Social influence
- ▶ Memory
- ▶ Attachment
- ▶ Psychopathology
- ▶ Approaches in Psychology
- ▶ Biopsychology
- ▶ Research methods
- ▶ Issues and debates in Psychology
- ▶ Relationships
- ▶ Stress
- ▶ Forensic Psychology
- ▶ Assessment
- ▶ 3 x 2 hour papers end of A level year.

Some say that I am the  
grandfather of psychology.  
Who am I?

***Psychology is very popular  
and of course we are all  
psychologists every day.***

***It is a very enjoyable  
subject and looks at areas  
which we all find relevant to  
ourselves.***

***It is therefore a self awareness exercise as well!***




# Psychology careers

- ▶ For example:
  - Forensic psychologist
  - Clinical psychologist
  - Business psychologist
  - Sports psychologist
  - Research
  - Teaching



Lots of useful info at: <http://www.bps.org.uk/careers-education-training/careers-education-and-training>

# Psychology is useful for many things...

- ▶ Any jobs that involve working with people – pretty much most jobs
  - ▶ Psychology is particularly useful for:
    - Legal careers – police service, lawyer, barrister
    - Health service jobs – doctor, nursing
    - Sports – coaching, management of teams
    - Management roles – motivating staff, keeping staff engaged at work, managing stress in staff
    - Teaching
    - Lots more...
- 



# To our students

- ▶ Leave your excuses at the door
  - ▶ If you didn't do your homework, just admit it but there will be a consequence
  - ▶ If you didn't understand the assignment, ask for help
  - ▶ If you didn't study for the test accept the grade and resolve to do better next time, with our help, if necessary.
- ▶ We are here to teach you. We will do our bit, but you need to do yours which is to take responsibility for your own learning.

# Any questions?

- ▶ Please take this opportunity to ask us any questions so that you can make an informed choice about whether, or not, to study psychology.
- ▶ We love it, but we are biased!